

**To arrange a viewing contact us
today on 01268 777400**



Hawkesbury Close, Canvey Island Guide price £450,000

GUIDE PRICE - £450,000 - £475,000

Aspire are delighted to present this exceptional three-bedroom semi-detached residence, enviably located within the highly sought-after Hawkesbury Close, Canvey Island. Designed with both style and substance in mind, this beautifully appointed home combines generous proportions with refined modern living — offering a rare opportunity to acquire a property of true distinction.

www.aspireestateagents.co.uk

Upon arrival, you're greeted by ample off-street parking and an inviting façade that sets the tone for what lies beyond. Inside, a spacious lounge diner opens seamlessly onto the garden, creating an effortless flow for entertaining and relaxation. The impressive kitchen diner, complete with utility area and direct garden access, is both functional and elegant — the heart of the home in every sense.

Upstairs, discover three beautifully proportioned double bedrooms, including a luxurious master suite featuring a walk-in wardrobe. A family bathroom and an additional shower room complete the thoughtfully designed accommodation. Outside, the magnificent 80ft rear garden provides an idyllic retreat for family living, al fresco dining, or tranquil evenings outdoors.

A perfect blend of comfort, quality, and sophistication — this is a home to be proud of.

Kitchen / Diner 3.48 m × 7.33 m 11.42 ft × 24.05 ft

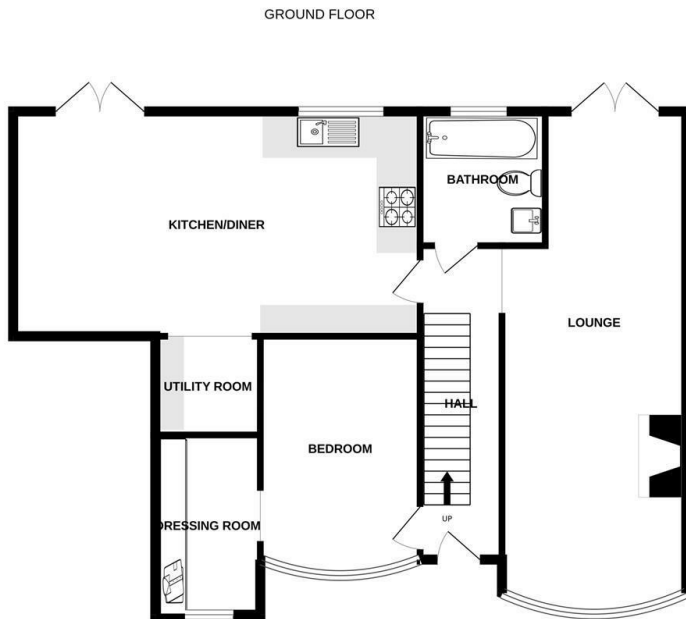
Lounge 8.04 m × 3.14 m 26.38 ft × 10.30 ft

Master Bedroom 2.82 m × 3.98 m 9.25 ft × 13.06 ft

Walk-in Wardrobe 1.57 m × 3.00 m 5.15 ft × 9.84 ft

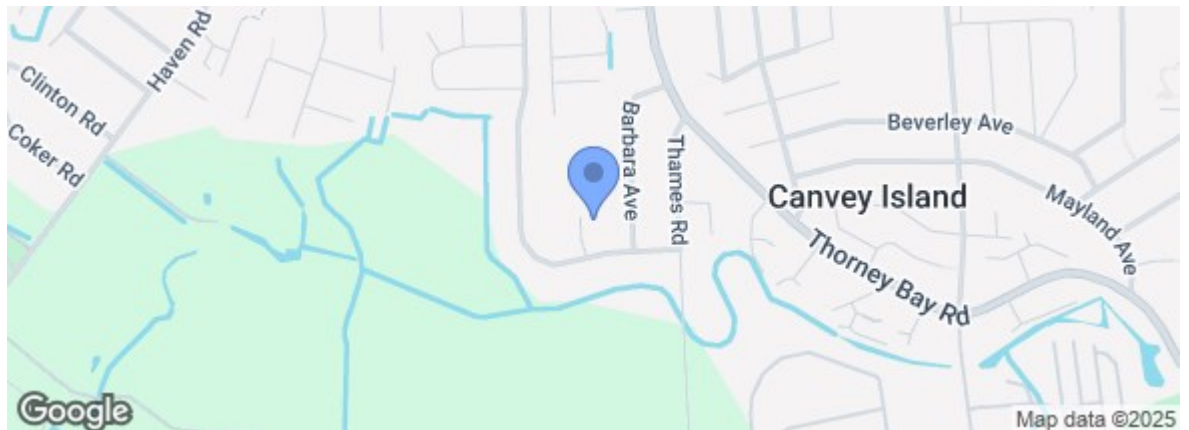
Bedroom 2 4.00 m × 3.80 m 13.12 ft × 12.47 ft

Bedroom 3 4.78 m × 2.81 m 15.68 ft × 9.22 ft



Whilst every attempt has been made to ensure the accuracy of the floorplan contained here, measurements of doors, windows, rooms and any other items are approximate and no responsibility is taken for any error, omission or mis-statement. This plan is for illustrative purposes only and should be used as such by any prospective purchaser. The services, systems and appliances shown have not been tested and no guarantee as to their operability or efficiency can be given.
Made with Metropix ©2025

Energy Efficiency Rating		Current	Potential
Very energy efficient - lower running costs			
(92 plus)	A		
(81-91)	B		
(69-80)	C		
(55-68)	D		
(39-54)	E		
(21-38)	F		
(1-20)	G		
Not energy efficient - higher running costs			
England & Wales		EU Directive 2002/91/EC	
Environmental Impact (CO ₂) Rating		Current	Potential
Very environmentally friendly - lower CO ₂ emissions			
(92 plus)	A		
(81-91)	B		
(69-80)	C		
(55-68)	D		
(39-54)	E		
(21-38)	F		
(1-20)	G		
Not environmentally friendly - higher CO ₂ emissions			
England & Wales		EU Directive 2002/91/EC	



Under the Property Misdescriptions Act 1991 we make every effort to ensure our sales details are accurate but they are a general outline and do not constitute any part of an offer or contract. Any services, equipment and fittings have not been tested and no warranty can be given as to their condition. We strongly recommend that all the information provided be verified by your advisors and in particular, measurements required for a specific purpose such as fitted furniture or carpets. Please tell us if you have any problems and members of our branches will help either over the phone or in person. A copy of our complaints procedure is available on request. The details are issued on the strict understanding that any negotiations in respect of the property named herein are conducted through Aspire Estate Agents.